

Customer:

ED'S Concrete

Project:

Window Well

Weight:

1900 lbs

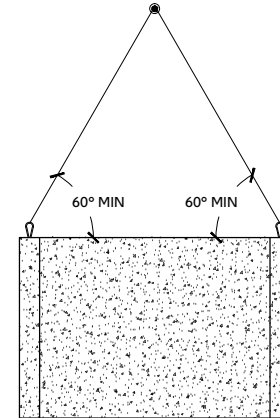
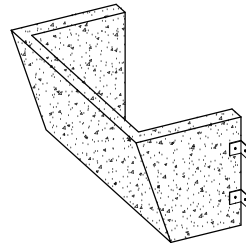
Colour:
Grey

Finish:
Smooth

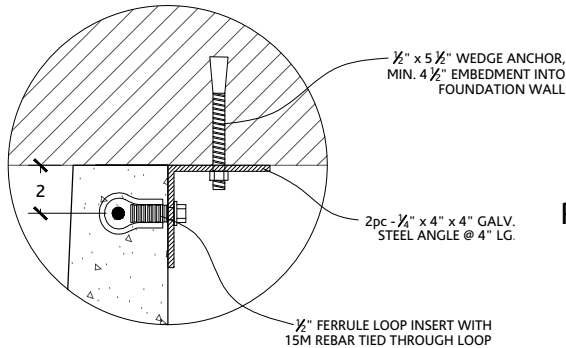
ISOMETRIC

LIFTING POINTS

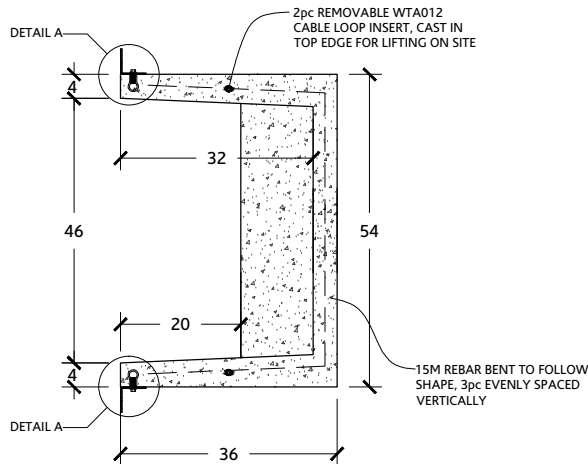
Mark	Length	Width	Qty
WSWW3-10	54	36	



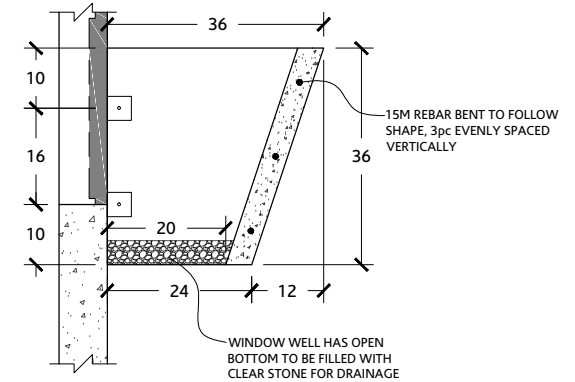
DETAIL A



PLAN VIEW



SECTION VIEW



Concrete:

- ultimate 28 day compressive strength f_c' shall not be less than 35MPa
- stripping compressive strength shall not be less than 10MPa
- durability shall be class of exposure F2
- maximum aggregate size of 14 mm.
- maximum water/cement ratio of 0.45
- air entrainment of 5-7%
- reinforcing steel shall be deformed steel bars having a minimum yield strength of 400MPa conforming to CSA G30.18
- all concrete work shall conform to CSA-A23.1, A23.2, A23.3 and A23.4
- minimum rebar cover shall be as shown on the drawing but not be < 25mm (1")
- all tolerances according to CSA A23.4-09 Clause 12

Design Loads:

- self weight only



Piece:

Precast Window Well (3' - 10")

Date: 10/30/20

Scale:

Detailer: C.A.

3/8" = 1'

Customer:

ED'S Concrete

Project:

Window Well

Weight:

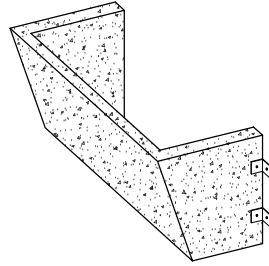
2000 lbs

Colour:
Grey

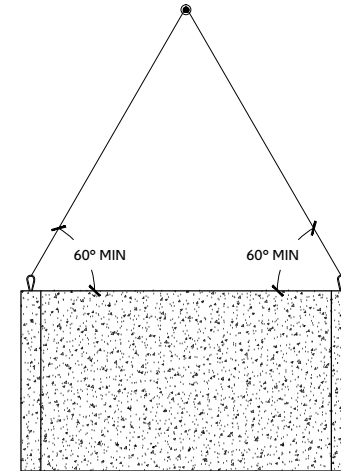
Finish:
Smooth

Mark	Length	Width	Qty
WSWW4-10	66	36	

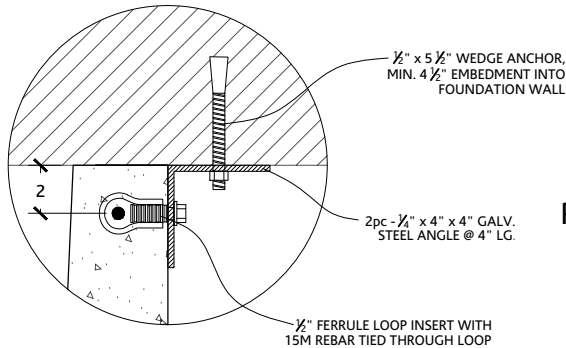
ISOMETRIC



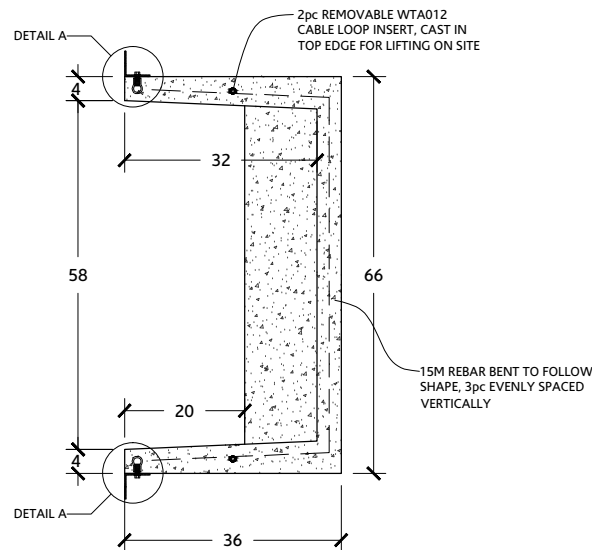
LIFTING POINTS



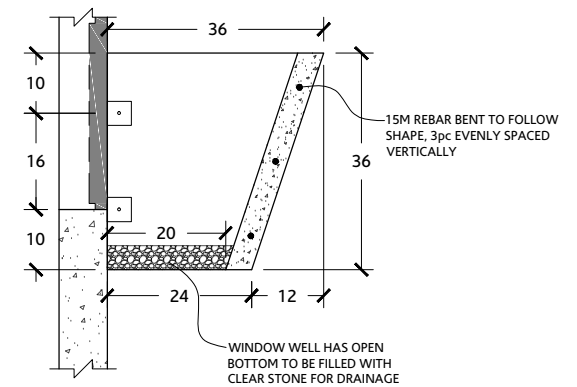
DETAIL A



PLAN VIEW



SECTION VIEW



Concrete:

- ultimate 28 day compressive strength f_c' shall not be less than 35MPa
- stripping compressive strength shall not be less than 10MPa
- durability shall be class of exposure F2
- maximum aggregate size of 14 mm.
- maximum water/cement ratio of 0.45
- air entrainment of 5-7%
- reinforcing steel shall be deformed steel bars having a minimum yield strength of 400MPa conforming to CSA G30.18
- all concrete work shall conform to CSA-A23.1, A23.2, A23.3 and A23.4
- minimum rebar cover shall be as shown on the drawing but not be < 25mm (1")
- all tolerances according to CSA A23.4-09 Clause 12

Design Loads:

- self weight only



Piece:

Precast Window Well (4' - 10")

Date: 8/7/20

Detailer: C.A.

Scale:

3/8" = 1'

Customer:

ED'S Concrete

Project:

Window Well

Weight:

2100 lbs

Colour:

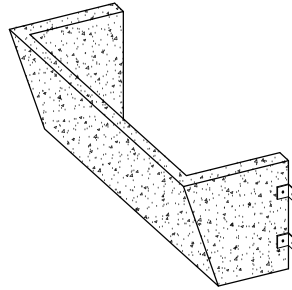
Grey

Finish:

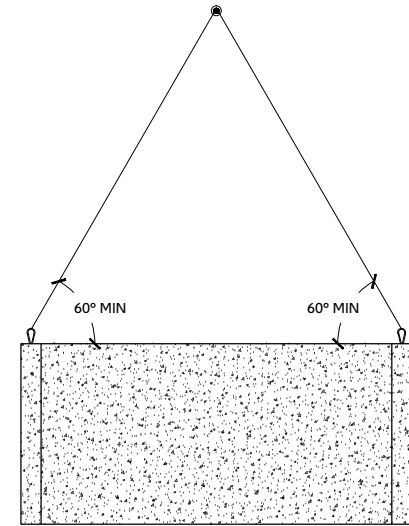
Smooth

Mark	Length	Width	Qty
WSWW5-10	78	36	

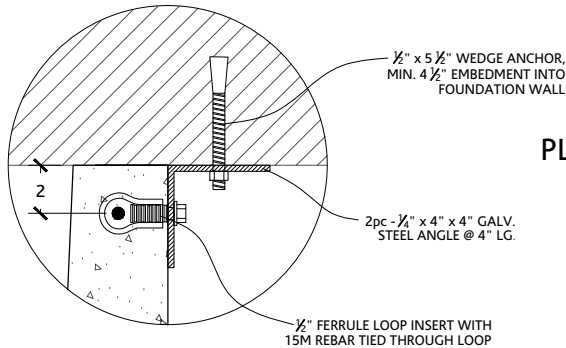
ISOMETRIC



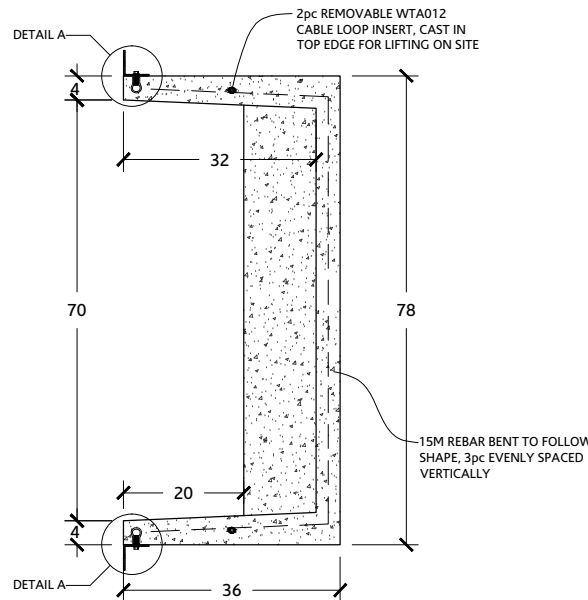
LIFTING POINTS



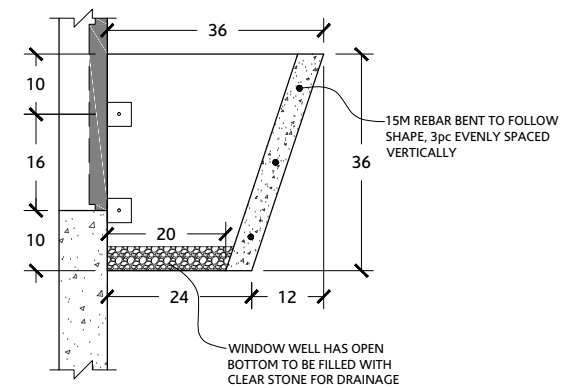
DETAIL A



PLAN VIEW



SECTION VIEW



Concrete:

- ultimate 28 day compressive strength f_c' shall not be less than 35MPa
- stripping compressive strength shall not be less than 10MPa
- durability shall be class of exposure F2
- maximum aggregate size of 14 mm.
- maximum water/cement ratio of 0.45
- air entrainment of 5-7%
- reinforcing steel shall be deformed steel bars having a minimum yield strength of 400MPa conforming to CSA G30.18
- all concrete work shall conform to CSA-A23.1, A23.2, A23.3 and A23.4
- minimum rebar cover shall be as shown on the drawing but not be < 25mm (1")
- all tolerances according to CSA A23.4-09 Clause 12

Design Loads:

- self weight only



Piece:

Precast Window Well (5' - 10")

Date: 8/7/20

Detailer: C.A.

Scale:

3/8" = 1'

Customer:

ED'S Concrete

Project:

Window Well

Weight:

2300 lbs

Colour:

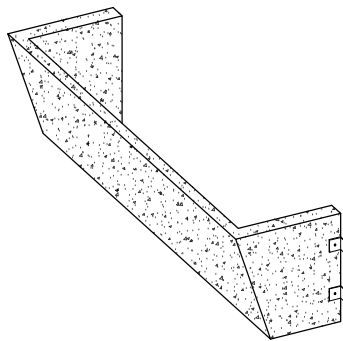
Grey

Finish:

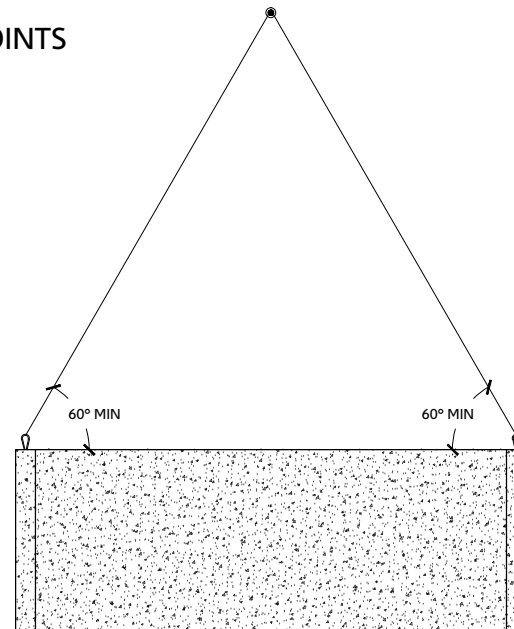
Smooth

Mark	Length	Width	Qty
WSWW7-10	102	36	

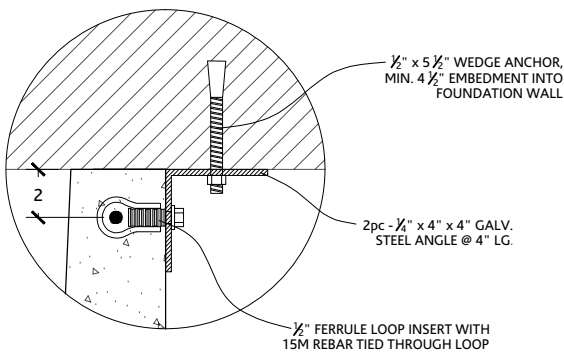
ISOMETRIC



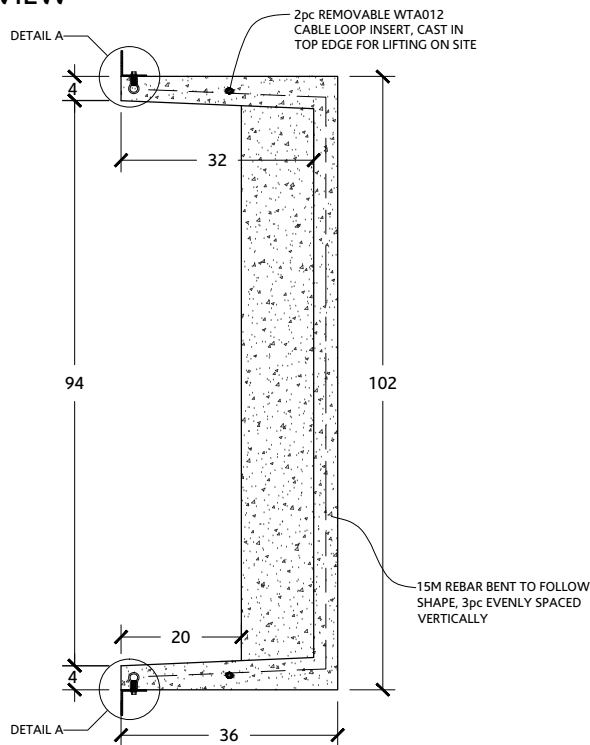
LIFTING POINTS



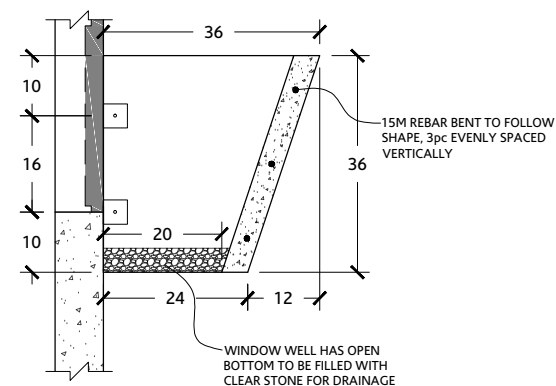
DETAIL A



PLAN VIEW



SECTION VIEW



Concrete:

- ultimate 28 day compressive strength f_c' shall not be less than 35MPa
- stripping compressive strength shall not be less than 10MPa
- durability shall be class of exposure F2
- maximum aggregate size of 14 mm.
- maximum water/cement ratio of 0.45
- air entrainment of 5-7%
- reinforcing steel shall be deformed steel bars having a minimum yield strength of 400MPa conforming to CSA G30.18
- all concrete work shall conform to CSA-A23.1, A23.2, A23.3 and A23.4
- minimum rebar cover shall be as shown on the drawing but not be < 25mm (1")
- all tolerances according to CSA A23.4-09 Clause 12

Design Loads:

- self weight only



Piece:

Precast Window Well (7' - 10")

Date: 8/7/20

Scale:

Detailer: C.A.

$\frac{3}{8}$ " = 1'